



Startup & Maintenance

for Jacuzzi® and Sundance®

FROG® @ease® is a hot tub sanitizing system* custom designed for Jacuzzi® and Sundance® Hot Tubs that takes the guess work out of water care so you always feel at ease while enjoying your hot tub.

DIRECTIONS FOR USE: For use in hot tubs up to 600 gallons. Use with the FROG @ease SmartChlor Cartridge in the FROG @ease Sanitizing System for Jacuzzi® and Sundance® Hot Tubs. Ensure all hot tub equipment is working properly. Operate the pump and filter as recommended by your hot tub manufacturer. Clean filter following manufacturer's directions. May be used with a previously filled hot tub unless it was sanitized with bromine or biguanides. Then drain and fill the hot tub with fresh water before using this product.



1. Balance your water

1. Use FROG test strips to ensure Alkalinity, pH, and Total Hardness are within recommended ranges.

Alkalinity	80-120 ppm
pH	7.2-7.8
Hardness	150-250 ppm

2. Adjust as needed, using balancers.
3. Add the FROG Jump Start® packet into the water to establish an initial residual of 0.5-1.0 ppm free chlorine.

2. Set the Cartridges

1. Remove SmartChlor® cartridge from package and turn dial to setting that matches your hot tub in gallons.

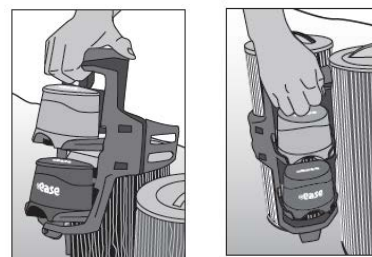
Jacuzzi® Spa Gallons	Setting #	Sundance® Spas - Gallons	Setting #
200-350	4	200-350	3
350-450	5	350-450	4
450-600	6	450-600	5

2. Turn the Mineral cartridge dial to #7. No further adjustments are necessary.

3. Put the System to Work (Jacuzzi®)

1. If the FROG @ease holder is already installed, remove by pulling up and away from filter cartridge with the handle.
2. Open the arms until they snap into position, insert the Mineral cartridge into the lower opening, pushing back until it locks in place.
3. Follow same procedure for the SmartChlor® cartridge in the upper opening.
4. With the cartridges facing the inside of the tub, slide the holder down around the filter that does NOT have the grid underneath until it covers the entire length of the filter.
5. Rotate the holder towards the other filter and re-install the filter cover.

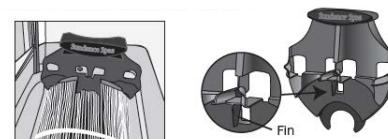
Jacuzzi® FROG @ease Cartridges



4. Put the System to Work (Sundance®)

1. To install, slide the holder down over the pipe where the nut holds the filter in place.
2. Make sure the openings for FROG cartridges are facing the filter and the fin goes between two pleats of the filter. Push down until it snaps in place.
3. Insert the Mineral cartridge into the opening closest to the outside of the hot tub.
4. Follow same procedure for the SmartChlor® cartridge in the other opening.

Sundance® FROG @ease Cartridges



5. Replacing Cartridges

1. Replace your Mineral Cartridge every four months, or when draining and refilling your hot tub.
2. Replace your SmartChlor® Cartridge when empty. Based on the FROG @ease Test Strips showing a lighter color than the "out" indicator on the bottle.
3. Cartridges will typically last 3-4 weeks for an average 400 gallon hot tub.

6. Routine Hot Tub Care

1. Drain and refill hot tub as directed by manufacturer.
2. Allow filtration system to be on and running on the usual cycle.
3. Test regularly with the FROG @ease Test Strips and follow directions.
4. Please note, the SmartChlor® cartridge will maintain 0.5-1.0 ppm free chlorine level as long as water is balanced.
5. Shock with a non-chlorine shock when replacing SmartChlor® cartridge, as well as once a week.

Need products for your spa but can't make it in to see us? Order from our website and receive *free shipping* to your home with any \$99 chemical and/or accessory purchase!

www.GalaxyHomeRecreation.com